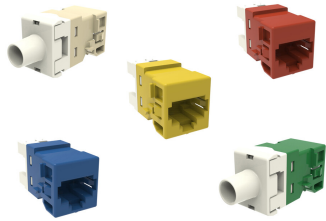


# UNJ500

## Base Product



## M-Series Modular Jack, RJ45, Cat5e Unshielded

## Product Classification

<b>Regional Availability</b>	North America
<b>Portfolio</b>	CommScope®
<b>Product Type</b>	Modular jack
<b>Product Series</b>	UNJ Series

## General Specifications

<b>ANSI/TIA Category</b>	5e
<b>Cable Type</b>	Unshielded
<b>Conductor Type</b>	Solid   Stranded
<b>Mounting</b>	M Series faceplates and panels
<b>Outlet Feature</b>	Inverted jack face
<b>Outlet Type</b>	Standard
<b>Termination Tool</b>	SL Termination tool
<b>Termination Type</b>	IDC
<b>Transmission Standards</b>	ANSI/TIA-568-C.2   ISO/IEC 11801 Class D
<b>Wiring</b>	T568A   T568B

## Dimensions

<b>Panel Thickness, recommended</b>	1.6 mm   0.063 in
<b>Compatible Insulated Conductor Diameter, maximum</b>	1.45 mm   0.057 in
<b>Contact Plating Thickness</b>	1.27 µm
<b>Compatible Conductor Gauge, solid</b>	24–22 AWG
<b>Compatible Conductor Gauge, stranded</b>	26–24 AWG

## Electrical Specifications

<b>Remote Powering</b>	Fully supports the safe delivery of power over LAN cabling described
------------------------	--

# UNJ500

---

by IEEE 802.3bt (Type 4) and complies with the unmating under electrical load requirements prescribed by IEC 60512-99-002

Supports IEEE 802.3bt Type 4 (90 W) applications after 3000 plug to jack mating cycles

## PoE Durability

## Material Specifications

### Contact Base Material

Beryllium copper

### Contact Plating Material

Gold

## Mechanical Specifications

### Plug to Jack Mating Cycles

Complies to IEC 60603-7 series

## Environmental Specifications

### Flammability Rating

UL 94 V-0