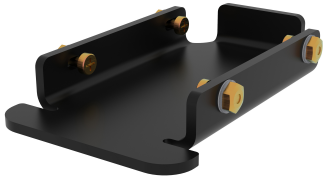


# FGS-HMEC-24

---



FiberGuide® Vertical End Cap Kit, 2x4in, Black

## Product Classification

<b>Regional Availability</b>	Asia   Australia/New Zealand   EMEA   Latin America   North America
<b>Portfolio</b>	CommScope®
<b>Product Type</b>	Fiber raceway end cap
<b>Product Brand</b>	FiberGuide®
<b>Product Series</b>	FGS

## General Specifications

<b>Product Feature</b>	Cordage containment   Cover retention
<b>Color</b>	Black
<b>Orientation</b>	Vertical
<b>Section Type</b>	End cap

## Dimensions

<b>System Dimensions</b>	51 mm x 102 mm (2 in x 4 in)
--------------------------	------------------------------

## Ordering Tree

# FGS-HMEC-24

FGS - HMEC - <sup>10</sup>A - <sup>11</sup>Y

## Section Size

10	A	4 x 4 in
	B	4 x 6 in
	C	2 x 2 in
	CA	2 x 2 in, for vertical slotted duct
	D	4 x 4 in, for vertical slotted duct
	E	4 x 2 in, for vertical slotted duct
	F	4 x 12 in
	G	2 x 6 in
	H	4 x 24 in
	M	4 x 18 in
	24	2 x 4 in, for vertical duct
	44	2 x 4 in, snap-on for vertical duct

## Section Color

11	empty	black
	Y	yellow

## Material Specifications

**Material Type** Polycarbonate

## Environmental Specifications

**Flammability Rating** CSA S143 | UL 2024 | UL 94 V-0

**Halogen Characteristics** Blue Angel | TCO '99 | WEEE

**Safety Standard** CSA | UL

## Packaging and Weights

**Weight, net** 0.041 kg | 0.09 lb

## Regulatory Compliance/Certifications

### Agency

CHINA-ROHS

REACH-SVHC

ROHS

UK-ROHS

### Classification

Below maximum concentration value

Compliant as per SVHC revision on [www.commscope.com/ProductCompliance](https://www.commscope.com/ProductCompliance)

Compliant

Compliant

