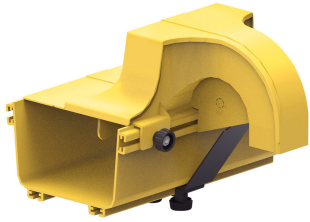


# FGS-MEXP-A/B/F

---



FiberGuide® 2-Inch Express Exit™, 4x4, 4x6, 4x12in, Yellow

## Product Classification

<b>Regional Availability</b>	Asia   Australia/New Zealand   EMEA   Latin America   North America
<b>Portfolio</b>	CommScope®
<b>Product Type</b>	Express exit
<b>Product Brand</b>	FiberGuide®
<b>Product Series</b>	FGS

## General Specifications

<b>Color</b>	Yellow
<b>Orientation</b>	Horizontal
<b>Section Type</b>	Express exit

## Dimensions

<b>Height</b>	125 mm   4.921 in
<b>Width</b>	254 mm   10 in
<b>System Dimensions</b>	102 mm x 102 mm (4 in x 4 in)   102 mm x 152 mm (4 in x 6 in)   102 mm x 305 mm (4 in x 12 in)   102 mm x 610 mm (4 in x 24 in)

## Ordering Tree

# FGS-MEXP-A/B/F



## Section Color

9	empty	yellow
	B	black

## Section Size

10	A/B/F	4 x 4/6/12 in, with 2 x 2 in exit
	E-A/B/F	4 x 4/6/12 in, with 4 x 4 in exit
	F-F/H-NC	4 x 12/18/24 in, with 4 x 12 in exit, no cover
	G-A/B/F	4 x 4/6/12 in, with 4 x 6 in exit
	LP-A/B/F	4 x 4/6/12 in, with 2 x 2 in exit, low profile
	LP-CA	4 x 4/6/12 in, with 2 x 4 in exit, low profile
	LP-G	2 x 6 in, with 2 x 2 in exit, low profile
	GS-ABF-NC	4 x 4/6/12 in, with 4 x 6 in exit, no cover
	CV	cover
	NC	no cover

## Material Specifications

**Material Type** Engineering Thermoplastic

## Environmental Specifications

**Flammability Rating** CSA S143 | UL 2024 | UL 94 V-0

**Halogen Characteristics** Blue Angel | TCO '99 | WEEE

**Safety Standard** CSA | UL

## Packaging and Weights

**Weight, net** 0.98 kg | 2.161 lb

## Regulatory Compliance/Certifications

### Agency

CHINA-ROHS

REACH-SVHC

ROHS

UK-ROHS

### Classification

Below maximum concentration value

Compliant as per SVHC revision on [www.commscope.com/ProductCompliance](https://www.commscope.com/ProductCompliance)

Compliant

Compliant

