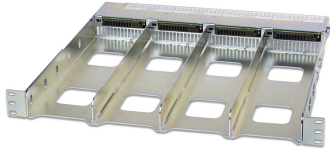


PS-R-1



PowerShift® Rack, accommodates up to 4 modules (3 separate circuits each for a total capacity of 12 RRU's when all 4 modules are installed)

- Reduced capital/operating expenditures
- Engineering flexibility
- Future-ready design

Product Classification

Product Type	Shelf
Product Brand	PowerShift®
Product Series	V1

General Specifications

Application	Mounts PowerShift® modules
Color	Silver metallic
Rack Type	EIA 19 in
Rack Units	1
Shelf Movement	Fixed

Dimensions

Height	44.45 mm 1.75 in
Width	482.6 mm 19 in
Depth	431.8 mm 17 in

Electrical Specifications

Electrical Safety Standard	UL60950-UL/cUL with CB report
-----------------------------------	-------------------------------

Packaging and Weights

Packaging quantity	1
Weight, net	4.536 kg 10 lb

Regulatory Compliance/Certifications

Agency	Classification
CE	Compliant with the relevant CE product directives

PS-R-1

CHINA-ROHS	Above maximum concentration value
ISO 9001:2015	Designed, manufactured and/or distributed under this quality management system
REACH-SVHC	Compliant as per SVHC revision on www.commscope.com/ProductCompliance
ROHS	Compliant/Exempted
UK-ROHS	Compliant/Exempted

